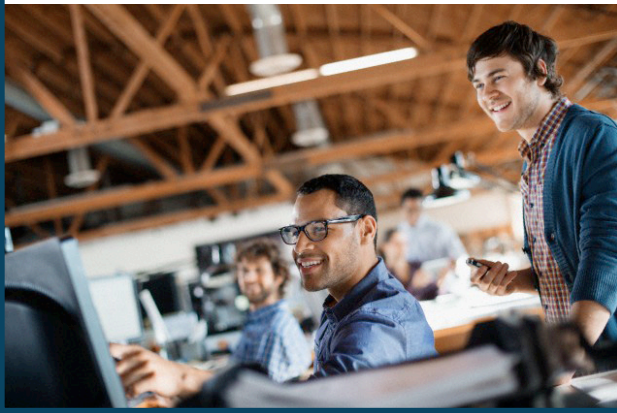


Why Health Alliance for Technology (ALLtech) Trust?

- Competitive prices through “large group” buying power
- Ease of administration with consolidated services through Associated Industries Management Services
- Comprehensive benefits for employers with as many as 199 employees
- Free COBRA administration
- Electronic fulfillment including plan booklets, summaries, and forms
- Wellness programs that can increase productivity and lower absenteeism, which can have a direct impact on the cost of providing healthcare benefits



Insurance Coverage Provided By:

- Regence BlueShield / Asuris
- Delta Dental of Washington
- VSP
- The Standard
- Magellan Health Services

Program Management provided by:



Wells Fargo Insurance Services USA, Inc.

999 Third Ave Suite 4100
Seattle, WA 98104
p: 206.731.1314

Last Revised 11/16/15



ALLtech
Health Alliance for Technology
www.ALLtechBenefits.com

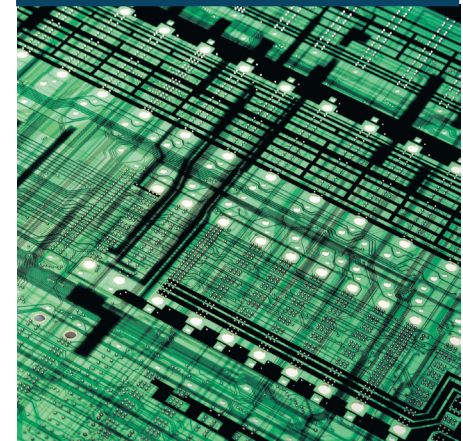
Competitive Pricing

Comprehensive Products

Consolidated Administration

Extensive Provider Networks

Health & Wellness Programs



ALLtech provides highly competitive group rates through contracts with the largest and most respected insurance carriers in the state of Washington.

Benefits are offered to technology companies with as many as 199 employees.

Ask your insurance professional for an ALLtech proposal, or contact us at:

Phone: 206.731.1314

Fax: 206.731.1209

E-mail: alltech.ins@wellsfargo.com

Forms and resources are available at:
www.alltechbenefits.com

Technology companies can access the following insurance plans through ALLtech.



Medical Insurance

Regence BlueShield / Asuris

- Premier Plans: \$250, \$500, \$1,000 and \$1500 deductible options with embedded \$10/\$30/\$50 Rx plan
- Choice Plans: \$500, \$1,000, \$1,500, and \$2,000 deductible options with embedded \$10/\$40/\$60 Rx plan
- Balance Plans: \$3,000 and \$5,000 deductible options with embedded \$10/\$40/\$60 Rx plan
- HSA Plans: \$1,500, \$2,500 and \$5,000 deductible options
- Flexible Portfolio Option: Gives employers the ability to offer multiple benefit plans to their employees
- Regence.com - treatment cost estimator, health coaching, health-risk assessment and numerous other health and wellness features

Benefits included with medical insurance:

The Standard

- \$15,000 of Basic Life & AD&D

Dental Insurance

Delta Dental of Washington

- Available for employers with as many as 199 employees
- PPO plans with up to \$2,000 annual maximum
- Four plans available
- Family and child orthodontia option available for groups over 10 employees

Vision Insurance

VSP

- Available for employers with as many as 199 employees
- Two plans available
- Eye exam every 12 months
- Hardware every 12 or 24 months

Basic Life & AD&D Insurance

The Standard

- Buy-up options available for employers with as many as 199 employees
- \$30,000, \$50,000, 1x salary to \$200,000 and 2x salary to \$250,000
- All guarantee issue

Voluntary Life / AD&D Insurance

The Standard

- Available for employers with as many as 199 employees
- Up to a maximum \$500,000 benefit for employee
- \$50,000 guarantee issue
- Preferred Industry Rating
- Spouse and Dependent Life /AD&D available

Employee Assistance Program

Magellan Health Services

- Worklife Program
- Face-to-face assessment sessions
- 1- 5 visit model
- Legal and Financial Consultation