

## Why Health Alliance for Technology (ALLtech) Health Trust?

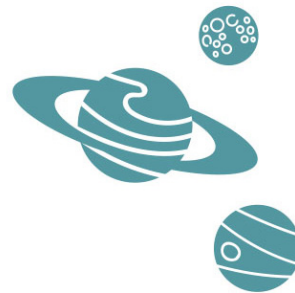
ALLtech helps growing technology companies recruit and retain top talent with comprehensive, affordable health and wellness benefits available exclusively to GeekWire members.

Benefits include:

- Online and mobile app tools help members shop, compare and save on health care 24/7
- The CHP CAMaffinity Program provides 20% discount on complementary and alternative medicine (CAM)
- Telehealth services help people receive services by phone or video at convenient times and without the need to travel
- A single point of contact for all types of plan administration including customer service, billing, eligibility and COBRA services
  - Easy insurance-buying experience offers predictable out-of-pocket expenses for employees and their dependents

## Insurance Coverage Provided By:

- Regence BlueShield / Asuris Northwest Health
  - Delta Dental of Washington
  - VSP Vision Care Inc.
    - The Standard
- Magellan Health Services



### Program Management provided by:



**Insurance &  
Benefit Solutions**

Advanced Professionals Insurance  
& Benefit Solutions  
1201 Third Ave., Suite 1600  
Seattle, WA 98101  
(206) 899-1895

ALLtech@BenefitResourceHub.com

Last Revised 11/15/17

**ALLTECH**  
SMART BENEFITS FOR NW INNOVATORS

ATTRACT AND RETAIN THE  
BEST TALENT IN THE UNIVERSE  
WITH SMART BENEFITS  
FROM ALLTECH



- Competitive Pricing
- Comprehensive Products
  - Consolidated Administration
- Extensive Provider Networks
- Health & Wellness Programs

READY FOR LIFT-OFF?  
[www.ALLtechBenefits.co](http://www.ALLtechBenefits.co)

m



ALLtech offers a solution for technology companies that addresses the biggest needs of both small to mid-sized employers and their employees: choice, coverage and cost.

Ask your insurance professional for an ALLtech proposal, or contact us at:

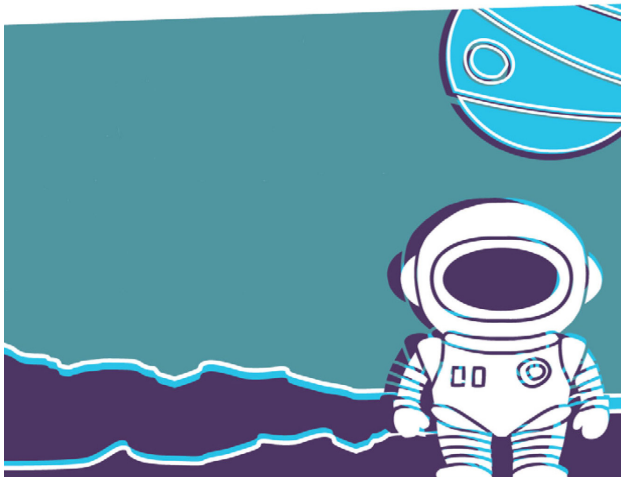
Phone: (206) 899-1895

E-mail: ALLtech@BenefitResourceHub.com

Forms and resources are available at: [www.ALLtechBenefits.com](http://www.ALLtechBenefits.com)

Whether you have two employees or more than 100, we have a benefit plan to fit your needs.

The following insurance plans are available through ALLtech:



## Medical Insurance

Regence BlueShield /  
Asuris Northwest Health

- Premier Plans: \$250, \$500, \$1,000 and \$1,500 deductible options with embedded \$10/\$30/\$50 Rx plan
- Choice Plans: \$500, \$750, \$1,000, \$1,500 and \$2,000 deductible options with embedded \$10/\$40/\$60 Rx plan
- Balance Plans: \$2,000, \$3,000 and \$5,000 deductible options with embedded \$10/\$40/\$60 Rx plan
- HSA Plans: \$1,500, \$2,500 and \$5,000 deductible options
- ActiveCare Plans: \$2,500 deductible specialized network plans (available for Regence BlueShield only)
- Regence.com: Treatment cost estimator, health coaching, health-risk assessment and numerous other health and wellness features
- **New telehealth benefit included**

## Dental Insurance

Delta Dental of Washington

- PPO plans with up to \$2,000 annual maximum
- **Multiple plans available**
- Family and child orthodontia option available for groups over 10 employees

## Vision Insurance

VSP Vision Care Inc.

- Two plans available
- Eye exam every 12 months
- Hardware every 12 or 24 months

## Basic Life & AD&D Insurance

The Standard

- \$15,000 of Basic Life & AD&D included with medical insurance
- Buy-up options available for employers with as many as 199 employees
- \$30,000, \$50,000, 1x salary to \$200,000 and 2x salary to \$250,000
- All guarantee issue

## Voluntary Life / AD&D Insurance

The Standard

- Up to a maximum \$500,000 benefit for employee
- \$50,000 guarantee issue
- Preferred Industry Rating
- Spouse and Dependent Life / AD&D available

## Disability

The Standard

- Three short-term disability plans
- Two long-term disability plans

## Employee Assistance Program

Magellan Health Services

- Worklife Program
- Face-to-face assessment sessions
- 1-5 visit model
- Legal and Financial Consultation